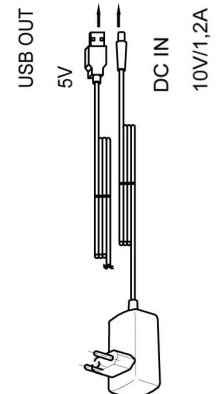
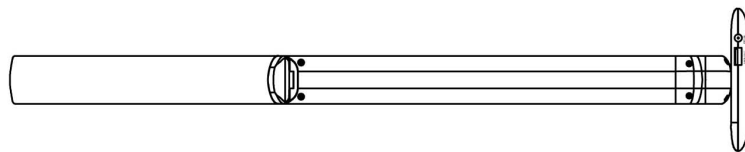
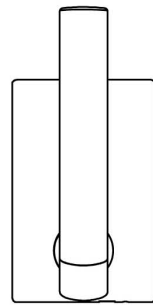
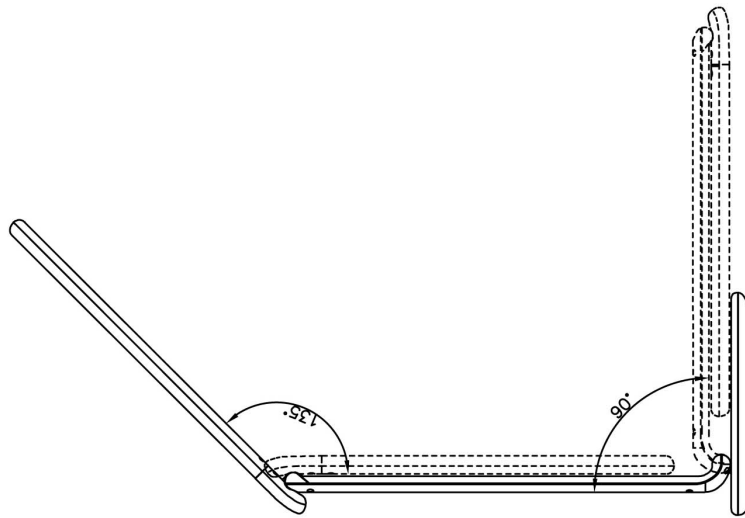
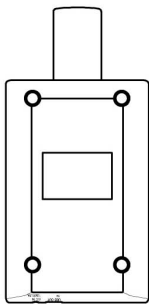
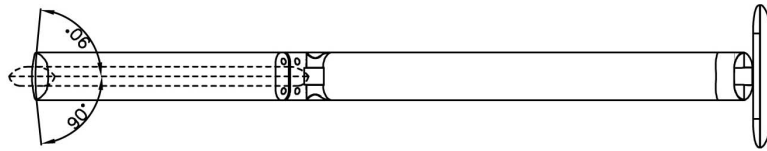
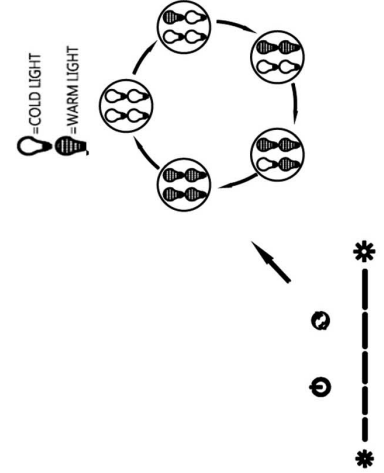


-DE- Montageanleitung	-LT- Montavimo instrukcija	-HU- Szerelési útmutató	-GR- Οδηγίες τοποθέτησης
-IT- Istruzioni per il montaggio	-LV- Montāžas instrukcija	-RO- Instrucțiuni de montaj	-DK- Montagevejledning
-FR- Instructions de montage	-EE- Paigaldusjuhend	-SI- Navodila za montažo	-FI- Asennusopas
-GB- Installation instructions	-PL- Instrukcja montażu	-HR- Upute za uporabu	-SE- montageinstruktion
-ES- Instrucciones de montaje	-CZ- Návod k montáži	-RS- Uputstva za upotrebu	-NO- Monteringsanvisning
-NL- Montagehandleiding	-SK- Montážny návod	-RU- Руководство по монтажу	-IS- samsetningarleiðbeiningar
-PT- Instruções de montagem	-BG- Инструкция за монтаж	-TR- Montaj Talimatı	

Artikel/Serie Nr.: 50228 / 50229



Euro Technics Trade GmbH  
Im Langel 6 . D-59872 Meschede

+49(0)2903-449 111    leuchtenservice@ettrade.de

Um die Garantie von 5 Jahren nutzen zu können, registrieren Sie sich bitte unter [www.wofi.de](http://www.wofi.de).

In order to take advantage of the 5-year-guarantee register at [www.wofi.de](http://www.wofi.de).



 LIGHTS



 4 LIGHTS